



How to set up Fronius Monitoring via SMART PHONE/TABLET Using the Datamanager V 2.0

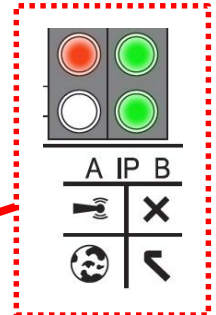
For Fronius SnapINverters: Galvo/Primo/Symo/Eco

BEFORE YOU START

Get the password and the name (SSID) of the WiFi network you want to get connect to.

Connect your smart phone or smart device to the WiFi network in order to check the availability of the internet.

Check the status of all the four LEDs on the Datamanager Card (DM) inbuilt in the inverter. The 'tick LED' and the 'cross LED' light up need to be green. If not, check the DM card and also termination plugs are inserted properly (located in the data communication compartment at the bottom of the inverter).



SETTING UP MONITORING USING A SMART PHONE OR A TABLET

Download Fronius Solar.Web App from App store or Google Play and install it on a smart phone or tablet.



[Android](#)
[iOS](#)
[Mac OSX](#)



[Android](#)
[iOS](#)



Fig.1: Inverter display Setup menu

/ Activate the 'WiFi Access Point' via the 'Setup menu' on the display of the inverter or alternatively move the IP switch on the DM card position 'A'.

- o **Note:** This display function is only available in the new version of the inverter software of Fronius Galvo/Primo/Symo/Eco. To update the inverter software, follow the instructions from the inverter manual.

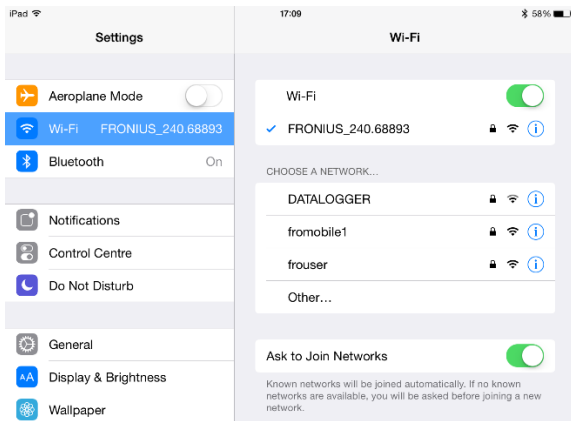


Fig.2: Network connections of Apple iPad

- / Connect the smart device (Tablet or Smartphone) to the WiFi network of the inverter.
 - o Search for the network with the name "Fronius_240.xxxxx" on your device.
 - o Enter password: **12345678**



Fig.3: Monitoring on a smart phone

- / Open the Solar.Web App on the smart device (smart phone or tablet) by selecting the red button or go to 'Settings' -> 'Setup inverter'

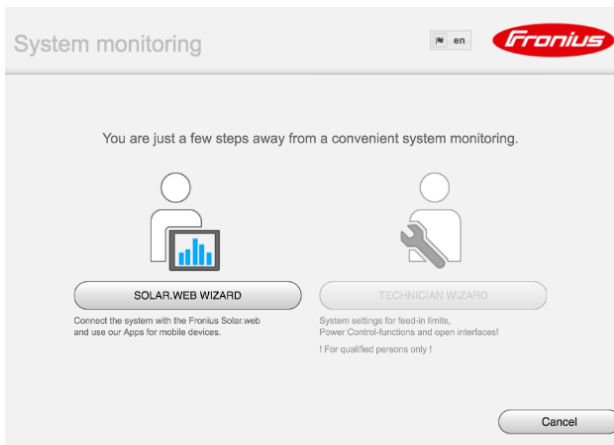


Fig.4: Start of the installation wizard in Fronius SolarWeb App

- / Run the **SolarWeb Wizard** and follow the instructions.

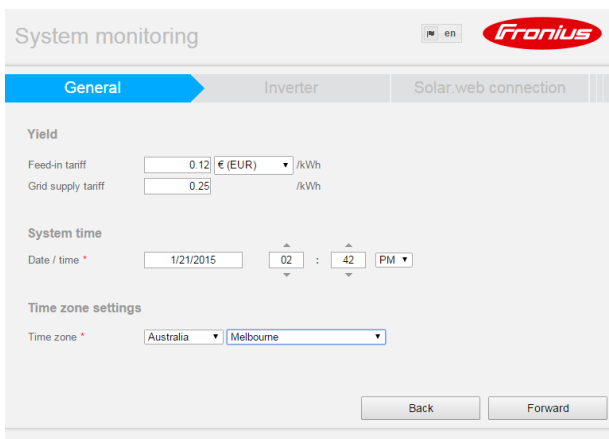


Fig.5: Fronius SolarWeb App General Settings

- / Enter the correct **date and time**.
- / Select the right **time zone**.

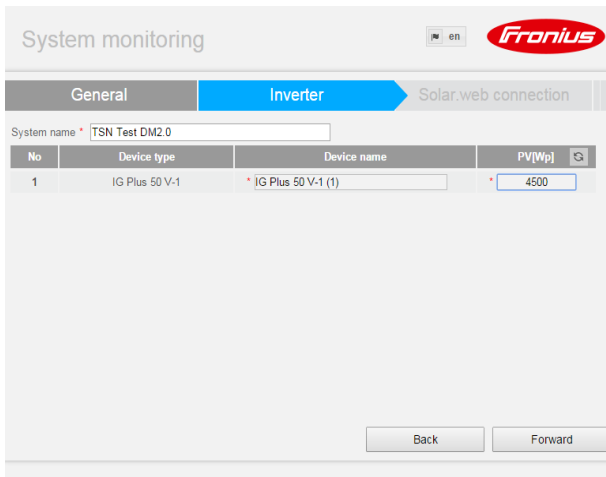


Fig.6: Fronius SolarWeb App Inverter Settings

- / Assign a **system name** to your system.
- / Enter the **solar module power** in Watts.

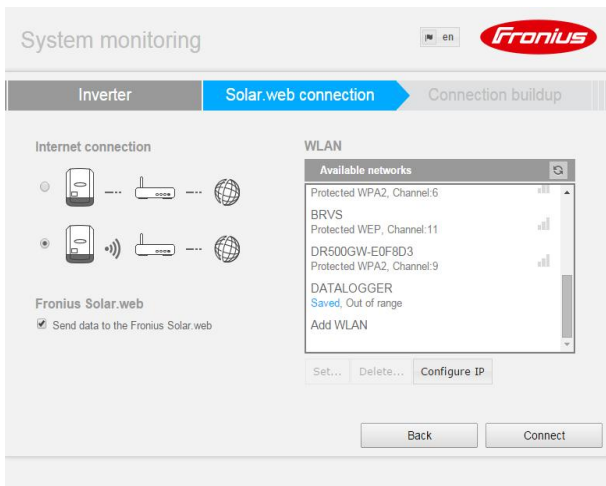


Fig.7: Fronius SolarWeb App Connection Settings

- / Choose the connection type: Hard wired **LAN connection** or wireless **LAN (WiFi)** connection
- / Select the customer's **Wi-Fi network** under the display of 'Available networks'.
- / **Note:** Option 'Add WLAN' is used to enter the name and password for the customer's hidden Wi-Fi network.
- / Click on '**Set**' to enter the password for the customer's Wi-Fi network. Click on '**Save**'.
- / Click on '**Configure IP**' and select '**dynamic**' to obtain an IP address dynamically.
- / Click on '**Connect**'

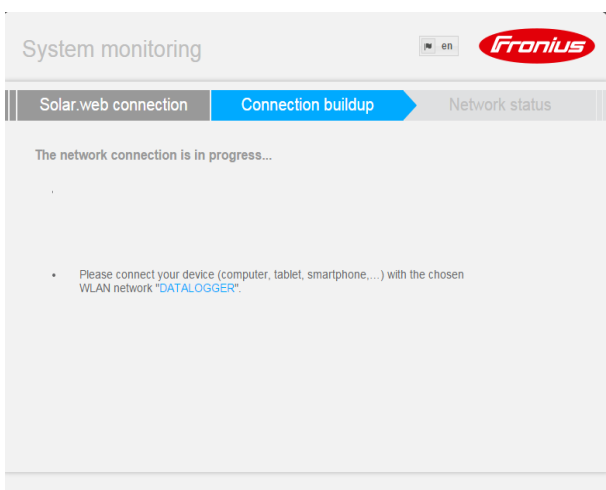


Fig.8: Wizard in Fronius SolarWeb App

- / Connect your smart device (Smartphone or Tablet) to the customer's network. (to check whether the inverter has connected to the customers network)

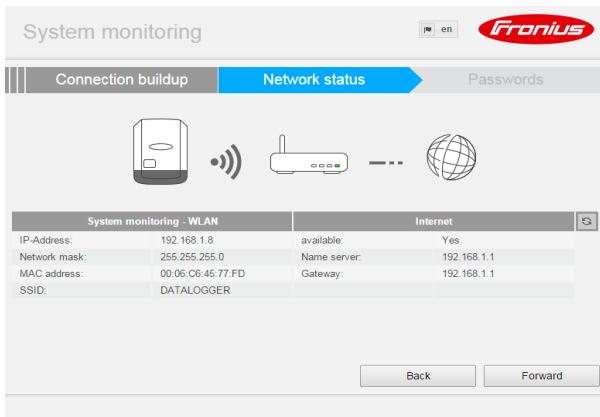


Fig.9: Wizard in Fronius SolarWeb App

/ Close and re-open the Solar.Web app and wait for this window to appear.

- o If the internet availability is displayed with 'Yes', click on 'Forward'.
- o If the internet availability is displayed with 'No' please, click on 'Back' to re-enter the (correct) password.

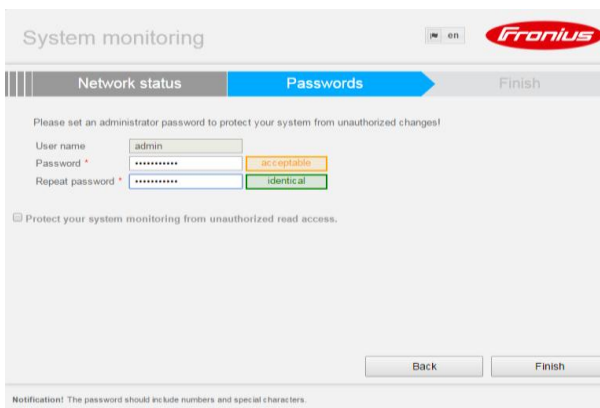


Fig.10: Wizard in Fronius SolarWeb App

/ Choose a **password**. (Also note down the password for your record.)

/ Click on 'Finish'.

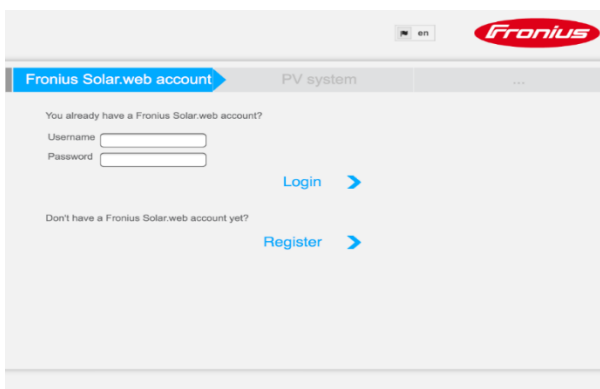


Fig.11: Wizard in Fronius SolarWeb App

- / To add the logging source to your monitoring account on SolarWeb,
 - ➔ Login with your username and password if you have already registered an account in the Fronius SolarWeb portal.
 - ➔ If you haven't created an account, click on 'Register' to create your account in order to register your PV system with the Datalogger ID (noted down earlier).
 - ➔ Alternatively the logging source can be added on www.solarweb.com -> 'Add system'

Fronius reserves all rights, in particular rights of reproduction, distribution and translation. No part of this work may be reproduced in any way without the written consent of Fronius. It must not be saved, edited, reproduced or distributed using any electrical or electronic system. You are hereby reminded that the information published in this document, despite exercising the greatest of care in its preparation, is subject to change and that neither the author nor Fronius can accept any legal liability. Gender-specific wording refers equally to female and male form.